

HOOSIERENERGY

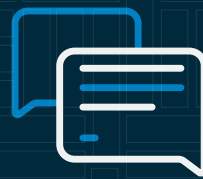
Welcome

Wheeler Creek to Kays
TransMission Line Project Open House

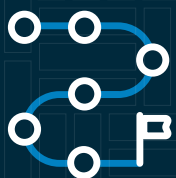
What you can expect to learn today:



Introduce Hoosier
Energy and the project



Get your input on
project routing



Learn about
the next steps



Answer your questions
about the project

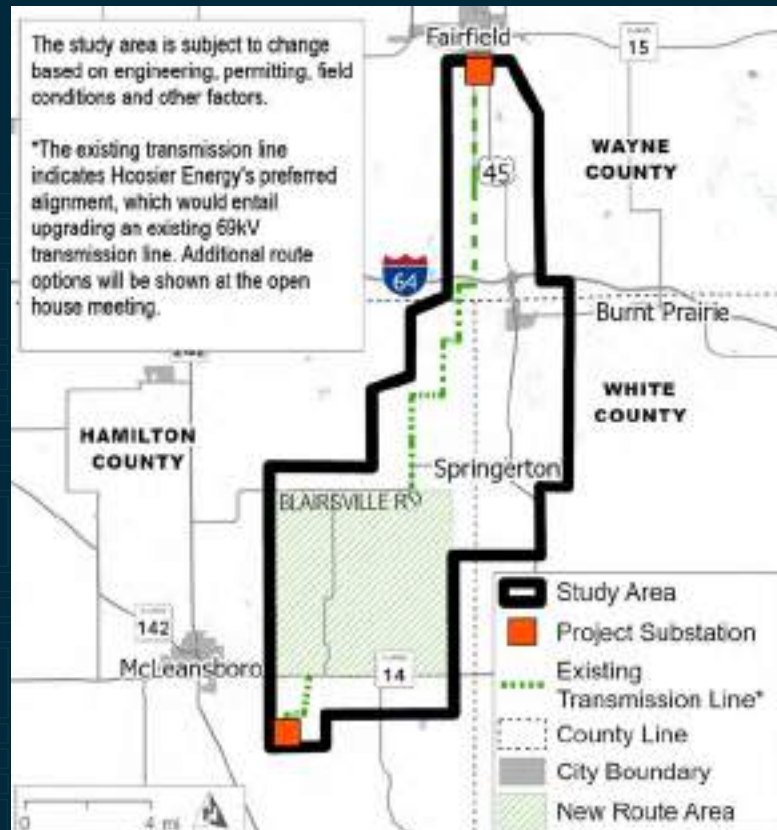
Project at a Glance

The Hoosier Energy Wheeler Creek to Kays Transmission Line Project represents a **critical infrastructure improvement** to ensure reliable electric service for south-central Illinois.

The project supports the **rebuild and upgrade of approximately 28 miles of transmission line** between the Fairfield South Substation and Wheeler Creek Substation.



These improvements will **strengthen the system, enhance reliability, and support efficient operations** for years to come.



About **HOOSIER**ENERGY

Hoosier Energy delivers reliable and affordable electricity to more than 700,000 people across Indiana and Illinois.



Member Driven

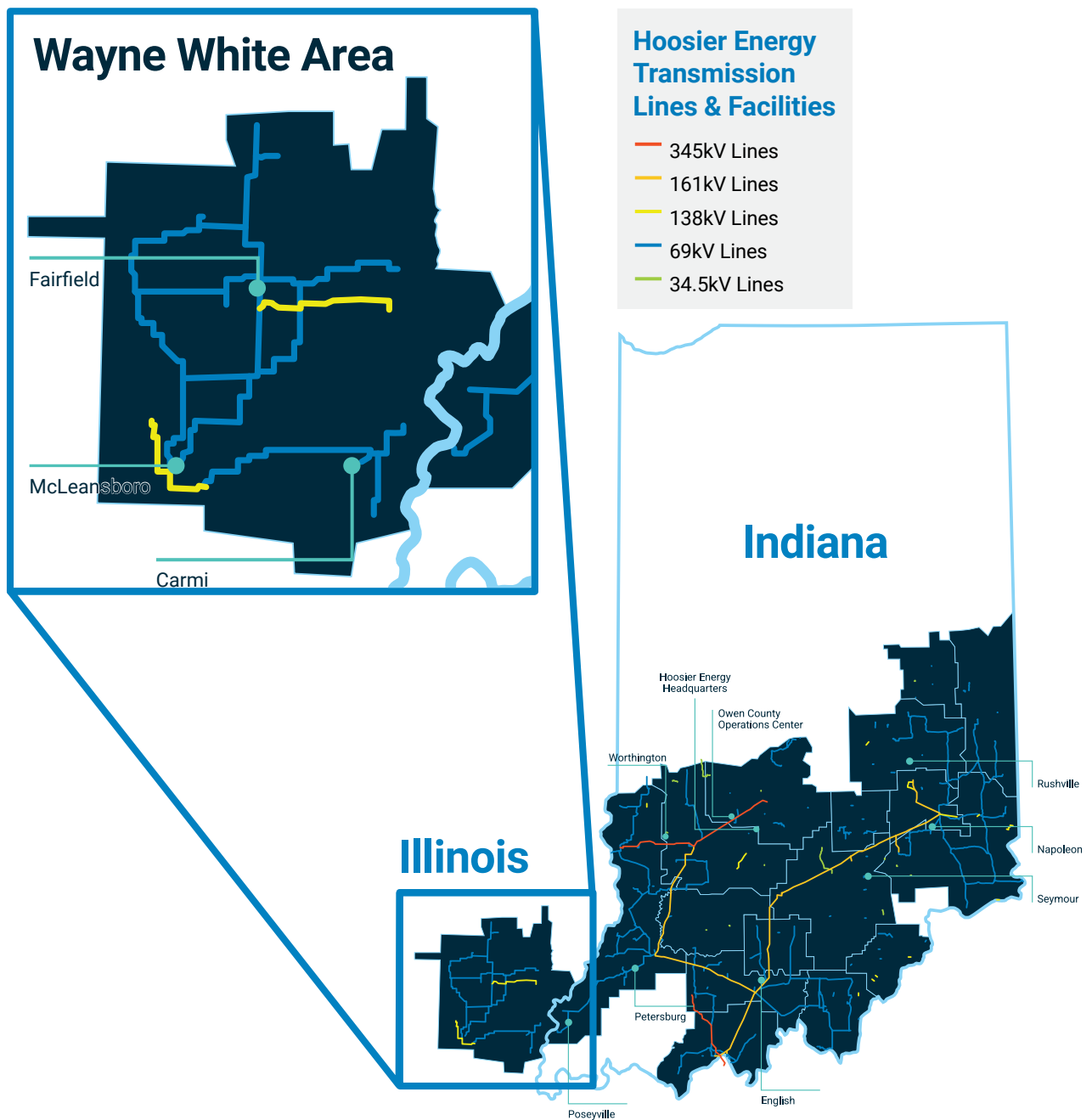
Unlike many major electrical utilities, our organization is not directed by a group of investors. Everything we do is on behalf of our members. We aren't profit-minded; we're member-minded.



Community Guided

Our decisions are guided by the farmers, families, and businesses we serve, true to the cooperative model. We closely operate in accordance to the seven cooperative principles and values, which make up the framework of our organization.

Map of Our Service Territory



Benefits Of the Project

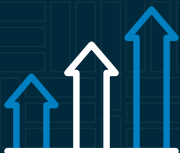
This project will help:



Keep electricity reliable for homes and businesses



Reduce outages



Provide more capacity to support future growth in the area



Make the overall system safer to meet today's standards

About the Routing Process



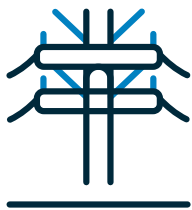
To begin, we **define a study area** between the Fairfield South and Wheeler Creek substations. This area sets the boundaries for where potential routes can be considered.



Next, we **identify several route options** and evaluate each one using detailed mapping, environmental data, engineering criteria, and community input.

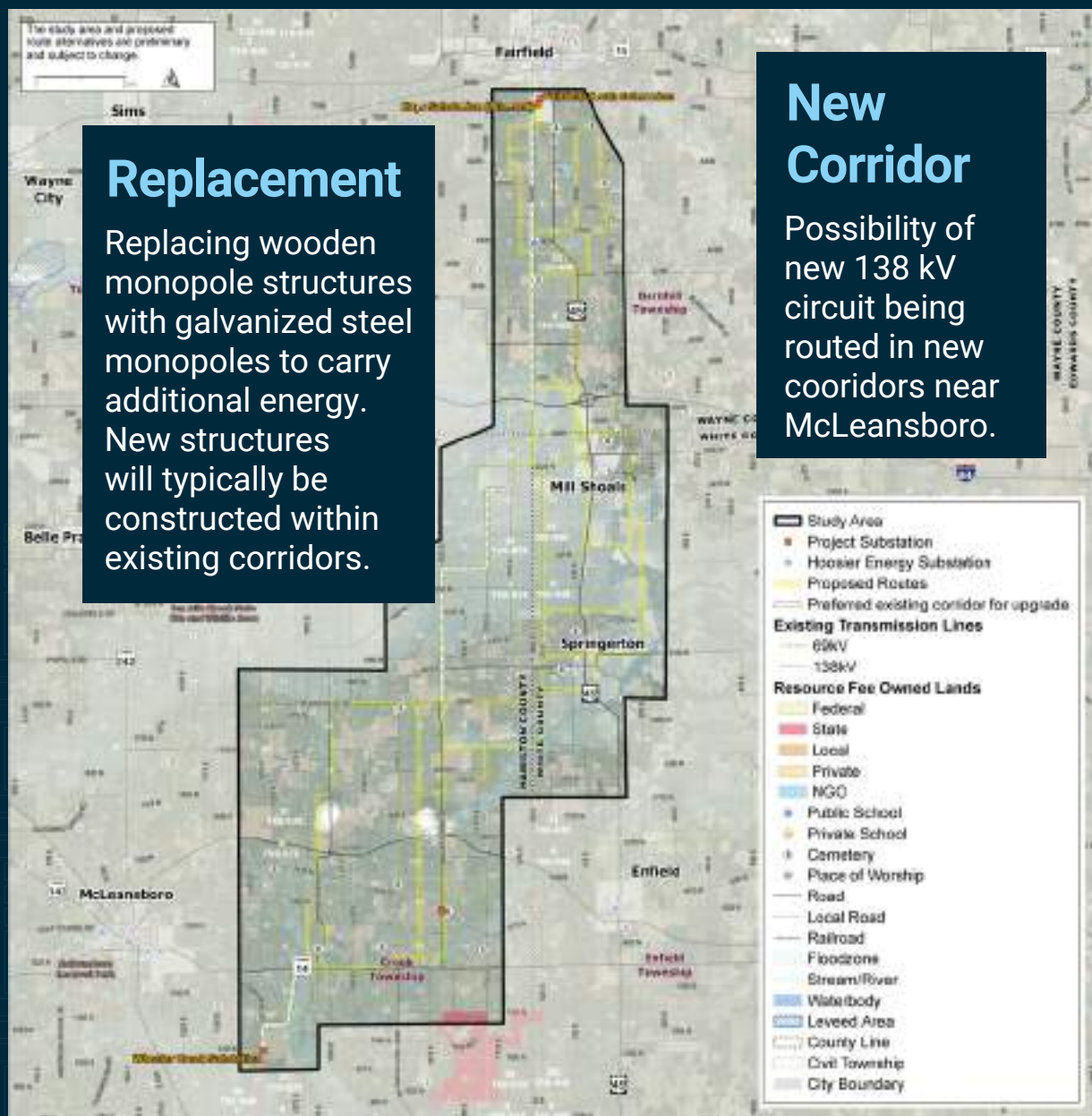


While the majority of the project is upgrading an existing transmission line, Hoosier Energy will need to revise existing easements or obtain new easements for the final route.



Finally, we compare and score the routes to **select the preferred option**. Public input is an important part of this process, helping us refine the route to minimize impacts while ensuring reliability and efficiency for the electric system.

Map of the Project Area



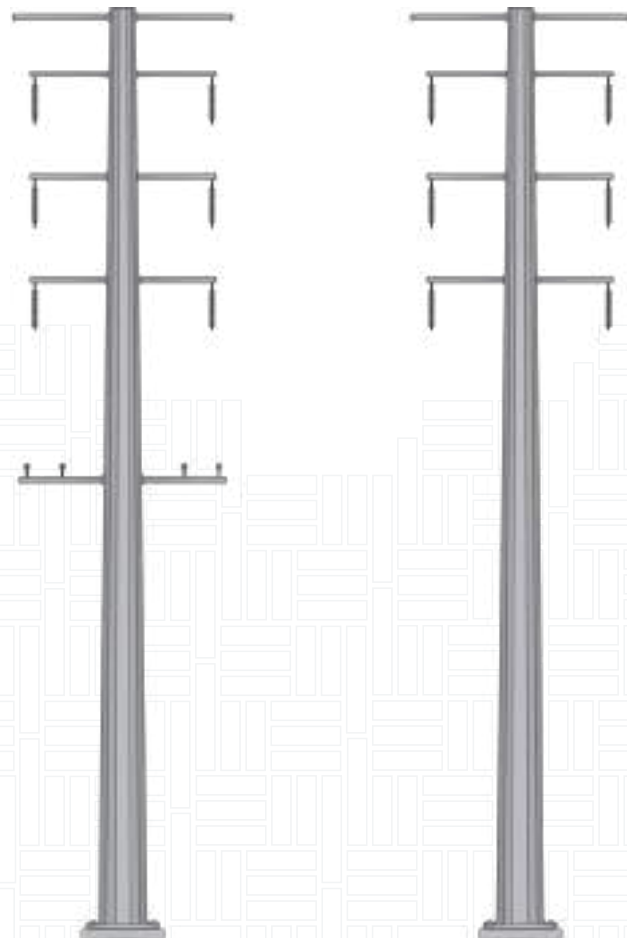
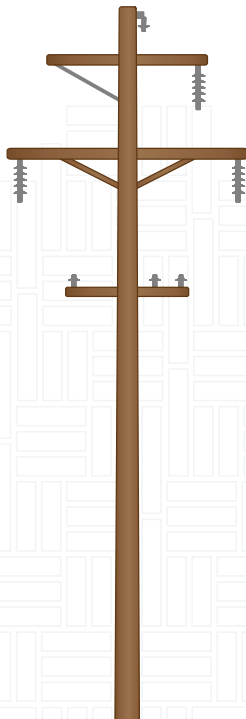
Proposed Typical Structure

Proposed Structure

138 kV galvanized steel monopole
Approx. 60-100 ft

Existing Structure

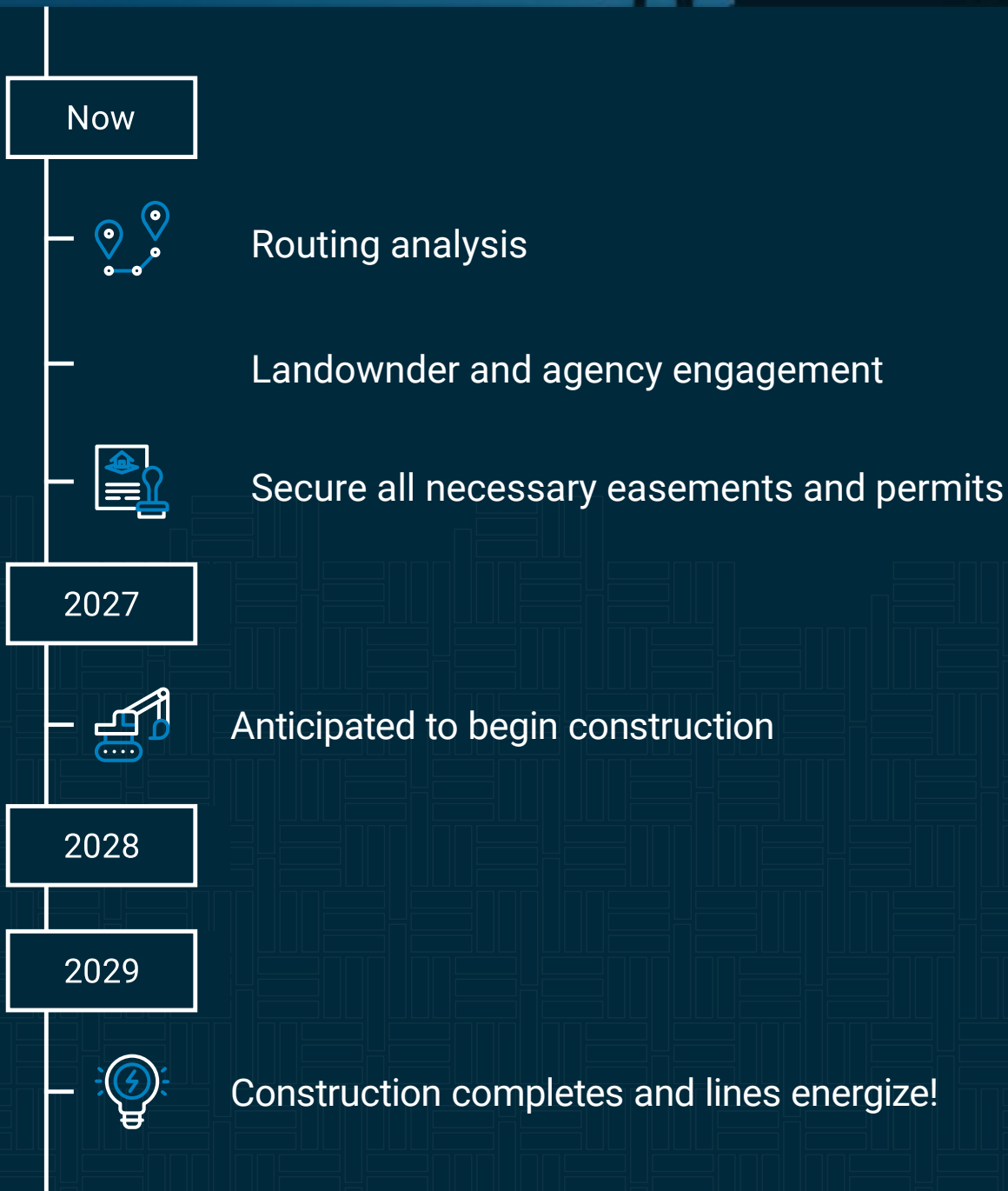
69 kV wooden monopole
Approx. 42-55 ft



A 100-foot ROW is needed for this project,
with 50 feet on either side of the center line.

Note: Proposed preliminary design, not to be used for construction. Structure designs may vary, including at turns, large crossings and dead-ends.

Schedule for the Project



Next Steps

Affected property owners will receive a letter stating that representatives from Hoosier Energy or its contractors will be visiting properties to perform any required review or survey prior to offering to purchase an easement.



Evaluate property



Data collection; environmental review, survey, etc.



If property qualifies, establish agreement compensation



Provide owners with a Land Value Market Study used to establish purchase price



Conduct good faith negotiations with property owners

Hoosier Energy will work closely with landowners to reach voluntary easement agreements.

Your Feedback Matters

**Your input is an important
part of the routing process!**

How to get in touch or provide comments:



Complete your **comment card** during the meeting and return it to project staff



Provide comments at the **GIS station**



Give us a call at **1-877-784-0276**



Email us at **wheelercreek@hepn.com**



Visit us at **HoosierEnergy.com/wheelercreek**