

VEGETATION MANAGEMENT

PROTECTING LAND,
ENSURING GRID RESILIENCY

Hoosier Energy's Impact

Hoosier Energy takes grid resiliency seriously. One way we accomplish this is through vegetation management for the rights-of-way we maintain on the grid.

Keeping the power on at homes and businesses connects to reliability, but also safety. Maintaining trees and vegetation helps Hoosier Energy reduce outages, improve storm restoration times, maintain equipment and keep our crews safe as they work on the grid.

Hoosier Energy's vegetation management program is a vital part of our commitment to grid resiliency. We value our long-standing relationship with property owners like you.

That is why we work to ensure vegetation maintenance is proactive and environmentally sound. We do this through established standards, wildlife impact review and clear communications with landowners like you.

**HOOSIER
ENERGY**

Creating the Path to Safe, Reliable Service

Overgrown trees and vegetation near power lines are leading causes for electrical outages. To prevent outages, the portion of the grid owned by Hoosier Energy must be inspected annually. This maintenance allow us to ensure proper clearances are maintained between trees and our high voltage lines. This reduces the length of power outages, equipment damage and fire hazards.

Our Approach to Vegetation Management

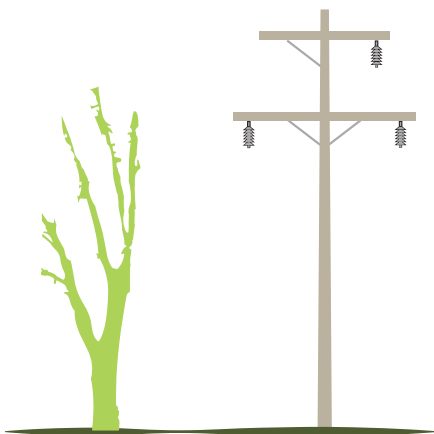
Hoosier Energy is taking a new approach to vegetation management. We work to find ways to limit the physical trimming and mowing of vegetation. We do this by using low-volume, targeted herbicides that affect the entire plant and generally need one application every few years.

When vegetation is physically removed by chainsaws or heavy machinery, only the above-ground portion of trees are removed, leaving the root systems intact. This allows brush to grow back faster, and it often does so with more coverage than before.



Lateral Pruning Methods

- Branches are removed at a parent branch or at a lateral branch.
- Branches growing into a utility line space are removed and those branches growing away from or parallel to the conductors remain.
- Trees are allowed to achieve their normal mature height with crown development away from the conductors.

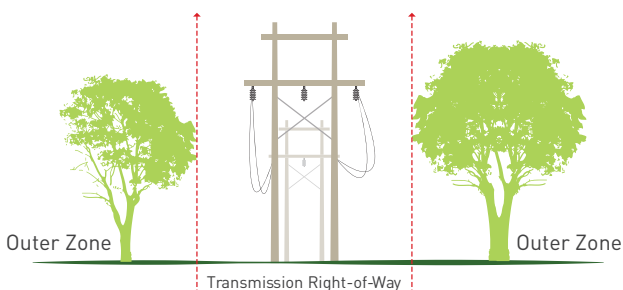


NOTE: In some cases, lateral tree pruning can be a good solution. However, trees growing underneath or directly adjacent to transmission lines often need to be removed.

Transmission right-of-way vegetation zones

Rights-of-way maintained by Hoosier Energy range from 100 to 150 feet in width based on the voltage. This is shown in the graphic as the space between the red dotted lines.

Hoosier Energy adheres to strict national electric safety code (NESC) and North American Electric Reliability Corporation (NERC) clearance standards.





Federal Requirements

To protect the electric grid from disturbances, the North American Electric Reliability Corporation (NERC) developed and enforces reliability standards. Affecting utilities like Hoosier Energy, these requirements address the need for an established vegetation management program for proper clearing of rights-of-way.

Protecting Wildlife Habitat

To protect and preserve habitat for the Monarch butterfly, a candidate for consideration as an endangered species, Hoosier Energy implements its conservation program for utility rights-of-way. Its goal is to develop habitat for beneficial pollinators.

This conservation program uses techniques including targeted herbicide treatment that help maintain a functioning ecosystem. Hoosier Energy is proud to aid in developing habitat that is beneficial to plants, animals and insects.

INFO EXTRA

For more information about the conservation program to develop habitat for pollinators, visit fws.gov/savethemonarch/CCAA.html

General Policies

Safety of our property owners

Property owners should never attempt to trim or remove tree limbs near power lines. If you are concerned about a tree near power lines, please call us at 800-456-1096, ext. 6252.

Proactive approach

Trees near power lines should be pruned before they grow into power lines. Our vegetation management program works proactively to provide adequate clearance at all times.

Advance notifications

We will attempt to notify property owners in advance of work to be performed. However, advance notice may not be possible during storms or other power emergencies.

Long-term perspective

We consider the long-range effects of our vegetation control practices. As a result, trees may be removed to promote long-term vegetation control, encourage natural grasses and forbs, and minimize the cost of future maintenance.

Accepted vegetation control methods




Only herbicides registered by the U.S. Environmental Protection Agency will be applied, as needed, by trained and certified applicators to manage low-growth vegetation. Vegetation removal via mechanized means is employed when required.

Debris cleanup

We will work with property owners to clean up and dispose of the collected brush and unchipped wood. Stumps are normally not removed, but will be cut as close to the ground as practical and treated with an approved herbicide.

Questions?

If you have questions or concerns we are here to help.

-  800-456-1096 ext. 6252
-  vegsafety@hepn.com
-  HoosierEnergy.com



About Hoosier Energy

As the generation and transmission provider for 18 electric cooperatives in central and southern Indiana and southeastern Illinois, Hoosier Energy's focus is simple. We are here to help your community thrive. Hoosier Energy owns and operates about 1,700 miles of high-voltage transmission lines.

LEARN MORE AT HOOSIERENERGY.COM

This institution is an equal opportunity provider and employer.

HOOSIERENERGY

2501 South Cooperative Way
Bloomington, IN 47403

