



September 20, 2018

Mr. Lon M. Petts
Hoosier Energy REC
Merom Generating Station
5500 West Old Highway 54
Sullivan, IN 47882

ATC Group Services LLC

7988 Centerpoint Dr.
Suite 100
Indianapolis, IN 46256

Phone +1 317 849 4990
Fax +1 317 849 4278

www.atcgroupservices.com

Re: Compliance with Location Restrictions
Cell 1 of Area 3 Type I Restricted Waste Landfill
Hoosier Energy - Merom Generating Station
Merom, Indiana

Dear Mr. Petts:

In accordance with your request, this letter is submitted to document that the design of existing Cell 1 of the Merom Generating Station Area 3- Type I Restricted Waste Landfill is in compliance with the Location Restriction outlined in Section §257.64 of the CCR Rule. Details regarding compliance with this restriction are provided below.

§257.64 Unstable Areas - As noted in the February 17, 2010 Permit Application for the Area 3 Restricted Waste Landfill, which was reviewed and approved by the Indiana Department of Environmental Management, there are no known underground mines or karst features within the solid waste boundary of Cell 1 of the landfill. Further, the application includes settlement analyses which document that the estimated settlement of the landfill is within acceptable ranges to ensure the intended performance of the liner and leachate collection system.

Please feel free to contact either of the undersigned if you have any questions regarding this information.

Sincerely,

ATC Group Services LLC

David L. Stelzer, Ph.D., P.E.
Senior Project Engineer

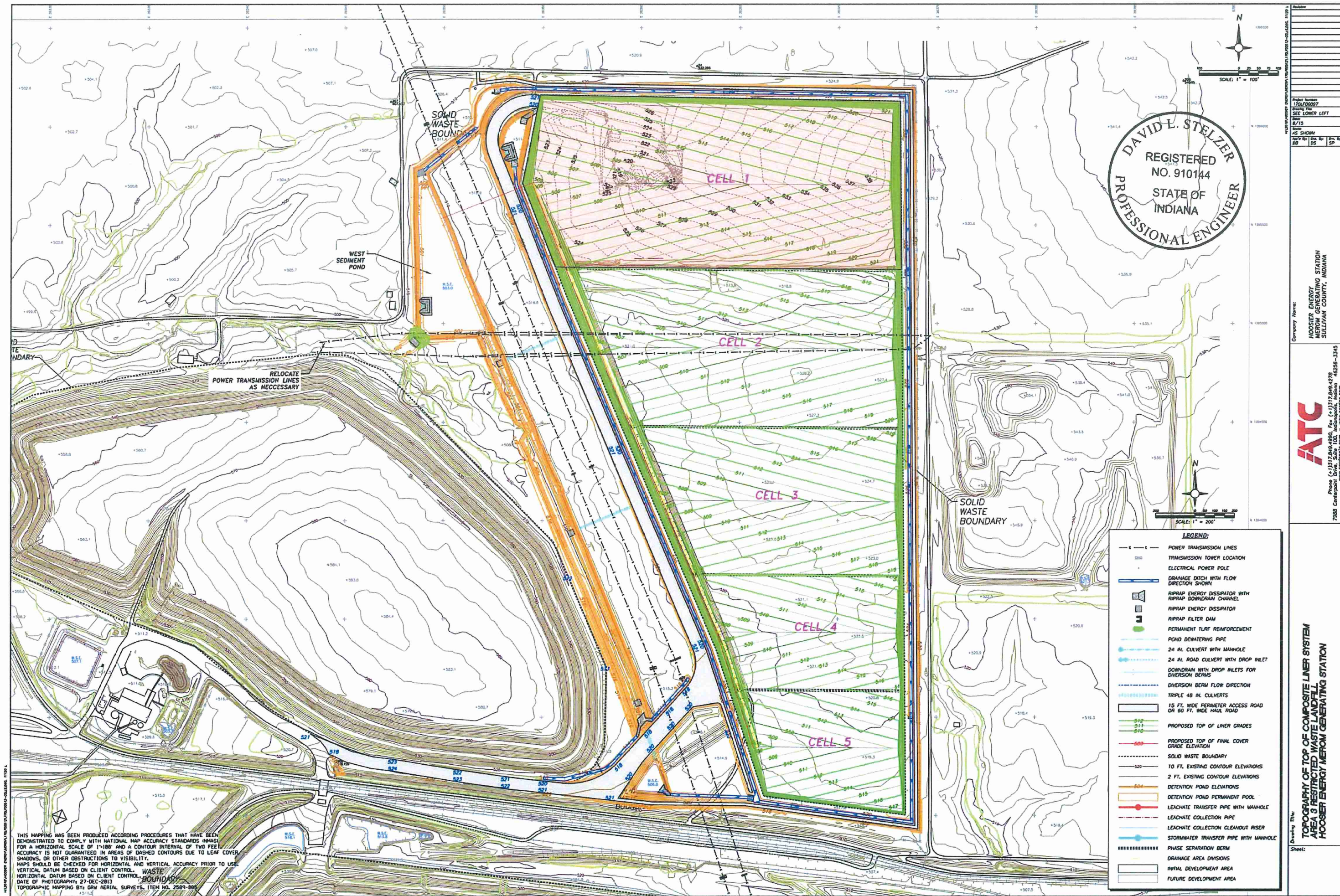
Donald L. Bryenton, P.E.
Principal Engineer

Copy: Lon Petts – Hoosier Energy



Attachments

Approximate Limits of Cell 1 of Area 3 Landfill



- LEGEND:**
- POWER TRANSMISSION LINES
 - TRANSMISSION TOWER LOCATION
 - ELECTRICAL POWER POLE
 - DRAINAGE DITCH WITH FLOW DIRECTION SHOWN
 - RIPPRAP ENERGY DISSIPATOR WITH RIPRAP DOWNSTREAM CHANNEL
 - RIPPRAP ENERGY DISSIPATOR
 - RIPPRAP FILTER DAM
 - PERMANENT TURF REINFORCEMENT
 - POND DRAINAGE PIPE
 - 24 IN. CULVERT WITH MANHOLE
 - 24 IN. ROAD CULVERT WITH DROP INLET
 - DOWNSTREAM WITH DROP INLETS FOR DIVERSION BERMS
 - DIVERSION BERM FLOW DIRECTION
 - TRIPLE 48 IN. CULVERTS
 - 15 FT. WIDE PERIMETER ACCESS ROAD OR 60 FT. WIDE HAUL ROAD
 - PROPOSED TOP OF LINER GRADES
 - PROPOSED TOP OF FINAL COVER GRADE ELEVATION
 - SOLID WASTE BOUNDARY
 - 10 FT. EXISTING CONTOUR ELEVATIONS
 - 2 FT. EXISTING CONTOUR ELEVATIONS
 - DETENTION POND ELEVATIONS
 - DETENTION POND PERMANENT POOL
 - LEACHATE TRANSFER PIPE WITH MANHOLE
 - LEACHATE COLLECTION PIPE
 - LEACHATE COLLECTION CLEANOUT RISER
 - STORMWATER TRANSFER PIPE WITH MANHOLE
 - PHASE SEPARATION BERM
 - DRAINAGE AREA DIVISIONS
 - INITIAL DEVELOPMENT AREA
 - FUTURE DEVELOPMENT AREA

THIS MAPPING HAS BEEN PRODUCED ACCORDING TO PROCEDURES THAT HAVE BEEN DEMONSTRATED TO COMPLY WITH NATIONAL MAP ACCURACY STANDARDS (NMAAS) FOR A HORIZONTAL SCALE OF 1"=100' AND A CONTOUR INTERVAL OF TWO FEET. ACCURACY IS NOT GUARANTEED IN AREAS OF DASHED CONTOURS DUE TO LEAF COVER, SHADOWS, OR OTHER OBSTRUCTIONS TO VISIBILITY. MAPS SHOULD BE CHECKED FOR HORIZONTAL AND VERTICAL ACCURACY PRIOR TO USE. VERTICAL DATUM BASED ON CLIENT CONTROL. HORIZONTAL DATUM BASED ON CLIENT CONTROL. DATE OF PHOTOGRAPHY: 27-DEC-2013. TOPOGRAPHIC MAPPING BY: GRW AERIAL SURVEYS, ITEM NO. 2589-001

Company Name: HOOSIER ENERGY MEROM GENERATING STATION SULLIVAN COUNTY, INDIANA

Project Number: 170700097

Drawing Title: SEE LOWER LEFT

Scale: 1" = 100'

Scale: 1" = 200'

North Arrow

North Arrow

ATC

Phone: (317) 846-6989, Fax: (317) 846-6979

7588 Centerville Drive, Suite 100, Indianapolis, Indiana 46236-1345

www.atcinc.com

www.cordnec.com

TOPOGRAPHY OF TOP OF COMPOSITE LINER SYSTEM AREA 3 RESTRICTED WASTE LANDFILL HOOSIER ENERGY MEROM GENERATING STATION

Sheet: