



September 20, 2018

Mr. Lon M. Petts
Hoosier Energy REC
Merom Generating Station
5500 West Old Highway 54
Sullivan, IN 47882

ATC Group Services LLC

7988 Centerpoint Dr.
Suite 100
Indianapolis, IN 46256

Phone +1 317 849 4990
Fax +1 317 849 4278

www.atcgroupservices.com

Re: Completion of Cell 2 Composite Liner & Leachate Collection System
Area 3 Type I Restricted Waste Landfill
Hoosier Energy - Merom Generating Station
Merom, Indiana

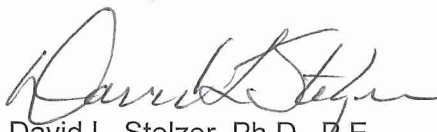
Dear Mr. Petts:

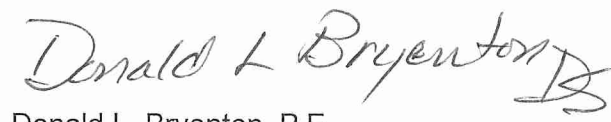
In accordance with your request, this letter is submitted to document that the composite liner and leachate collection system in Cell 2 of the Area 3 Landfill at the Merom Generating Station was completed on August 31, 2018. The approximate limits of Cell 2 are noted on the attached drawing.

Further, this letter is submitted to document that the undersigned professional engineers certify that the Cell 2 composite liner and leachate collection system were constructed in accordance with the permit and design requirements which were reviewed and approved by the Indiana Department of Environmental Management on March 31, 2011.

Please feel free to contact either of the undersigned if you have any questions regarding this information.

Sincerely,
ATC Group Services LLC


David L. Stelzer, Ph.D., P.E.
Senior Project Engineer

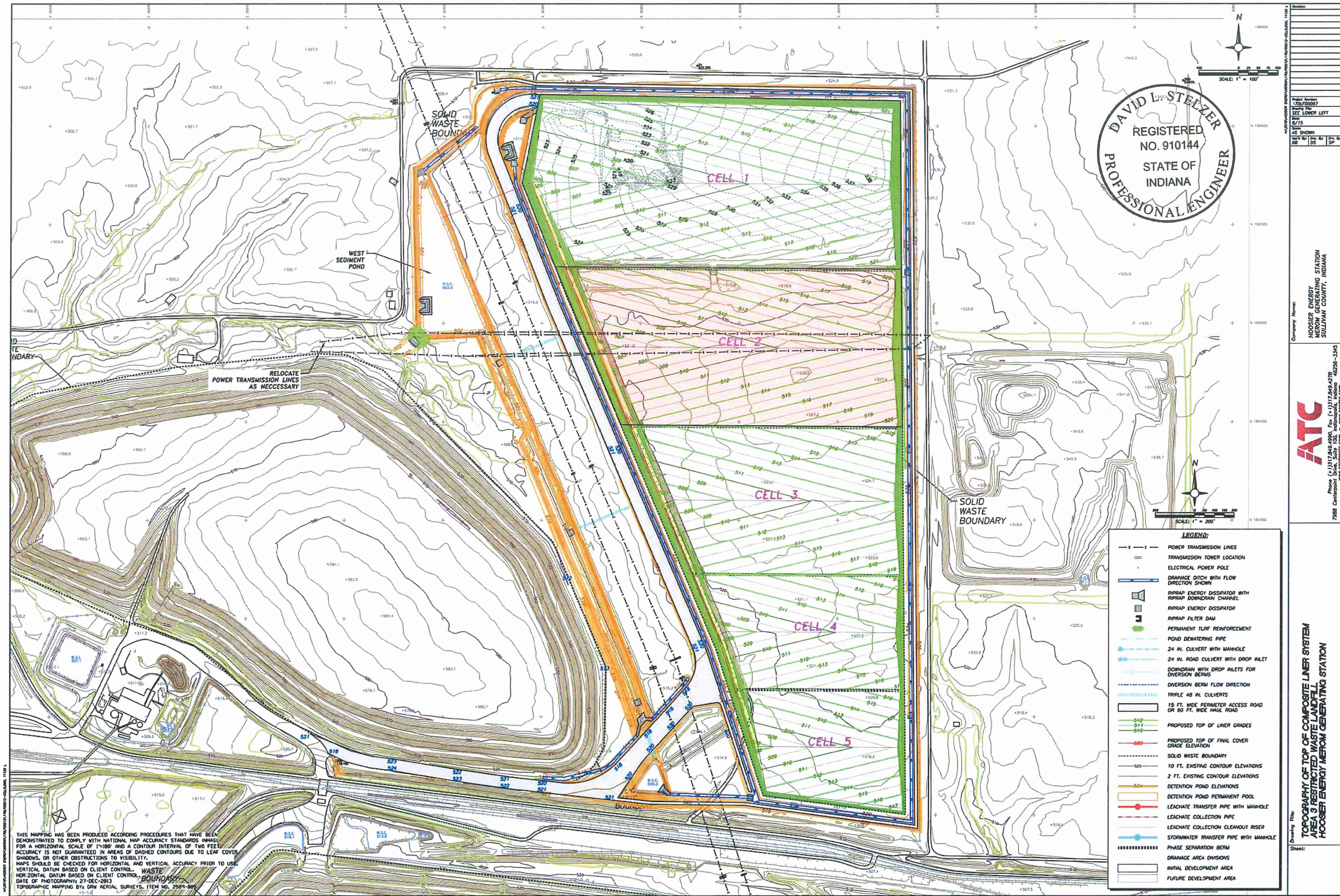

Donald L. Bryenton, P.E.
Principal Engineer

Copy: Lon Petts – Hoosier Energy

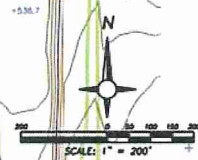
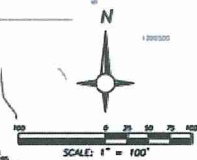


Attachments

Approximate Limits of Cell 2 of Area 3 Landfill



DAVID L. STELZER
REGISTERED
NO. 910144
STATE OF
INDIANA
PROFESSIONAL ENGINEER



- LEGEND:**
- POWER TRANSMISSION LINES
 - TRANSMISSION TOWER LOCATION
 - ELECTRICAL POWER POLE
 - DRAINAGE DITCH WITH FLOW DIRECTION SHOWN
 - RIPPRAP ENERGY DISSIPATOR WITH RIPRAP DOWNSTREAM CHANNEL
 - RIPPRAP ENERGY DISSIPATOR
 - RIPPRAP FILTER DAM
 - PERMANENT TURF REINFORCEMENT
 - POND DEWATERING PIPE
 - 24 IN. CULVERT WITH MANHOLE
 - 24 IN. ROAD CULVERT WITH DROP INLET
 - DRAINAGE DITCH WITH DROP INLETS FOR DIVERSION BERMS
 - DIVERSION BERM FLOW DIRECTION
 - TRIPLE 48 IN. CULVERTS
 - 15 FT. WIDE PERIMETER ACCESS ROAD OR 60 FT. WIDE HAUL ROAD
 - PROPOSED TOP OF LINER GRADES
 - PROPOSED TOP OF FINAL COVER GRADE ELEVATION
 - SOLID WASTE BOUNDARY
 - 10 FT. EXISTING CONTOUR ELEVATIONS
 - 2 FT. EXISTING CONTOUR ELEVATIONS
 - DETENTION POND ELEVATIONS
 - DETENTION POND PERMANENT POOL
 - LEACHATE TRANSFER PIPE WITH MANHOLE
 - LEACHATE COLLECTION PIPE
 - LEACHATE COLLECTION CLEANOUT RISER
 - STORMWATER TRANSFER PIPE WITH MANHOLE
 - PHASE SEPARATION BERM
 - DRAINAGE AREA DIVISIONS
 - INITIAL DEVELOPMENT AREA
 - FUTURE DEVELOPMENT AREA

THIS MAPPING HAS BEEN PRODUCED ACCORDING TO PROCEDURES THAT HAVE BEEN DEMONSTRATED TO COMPLY WITH NATIONAL MAP ACCURACY STANDARDS (NMAAS) FOR A HORIZONTAL SCALE OF 1"=100' AND A CONTOUR INTERVAL OF TWO FEET. ACCURACY IS NOT GUARANTEED IN AREAS OF DASHED CONTOURS DUE TO LEAF COVER, SHADOWS, OR OTHER OBSTRUCTIONS TO VISIBILITY. MAPS SHOULD BE CHECKED FOR HORIZONTAL AND VERTICAL ACCURACY PRIOR TO USE. VERTICAL DATUM BASED ON CLIENT CONTROL. WASTE LANDFILL AREA 3 RESTRICTED WASTE LANDFILL. DATE OF PHOTOGRAPHY: 27-DEC-2013. TOPOGRAPHIC MAPPING BY: GRV AERIAL SURVEYS, ITEM NO. 2509-000.

Company Name: HOOSIER ENERGY MEROM GENERATING STATION SULLY COUNTY, INDIANA

Project Number: 170700007

Drawing Title: SEE LOWER LEFT

Date: 8/15

Scale: AS SHOWN

Sheet: 25 of 30

ATC

Phone: (317) 846-4900, Fax: (317) 846-4979

700B Centerville Drive, Suite 100, Indianapolis, Indiana 46226-3343

www.atcinc.com

Drawing Title: TOPOGRAPHY OF TOP OF COMPOSITE LINER SYSTEM AREA 3 RESTRICTED WASTE LANDFILL HOOSIER ENERGY MEROM GENERATING STATION

Sheet: 25 of 30